

# EVOLUTION

STATIONARY MOUNT

# ROTOBEC

TOUGH HANDLING EQUIPMENT



## A NEW STANDARD OF TOUGHNESS

UNBEATABLE STRENGTH. INCREDIBLE RESULTS.

---



# TOUGH HANDLING EQUIPMENT

TOTAL TOUGHNESS COMES STANDARD. Speed, precision, and agility, all packaged up into one tough handling machine.



The EVOLUTION brings a level of toughness and efficiency like you have never seen. This loader is a heavy duty alternative to our OPTIMAX 950, designed for customers in need of increased lift at a distance. With an additional 25 hp (100 hp) and 5 ft of standard reach (32 ft), the EVOLUTION is able to achieve incredible lift capacity while offering the same cost savings you get from the OPTIMAX 950. Thanks to its compact design and four available configurations, there is literally no limit to variety of applications or environments this loader will thrive in. Equipped with a load sensing control valve, hydraulic accumulator and the industry's most spacious cab, the EVOLUTION gives you everything you need to perform your best.





**26,300 LB** MAX LIFT CAPACITY

**100 HP** HIGH EFFICIENCY ELECTRIC MOTOR

**32 FT** HEAVY DUTY BOOM (STANDARD)

**45 INCH** SLEWING RING

**4,200 PSI** OPERATING PRESSURE

**125 GAL** OIL TANK



# EXTRAORDINARY EFFICIENCY

The EVOLUTION not only has outstanding strength and durability, but its 100 hp electric motor also makes it one of the most efficient loaders of its size. The EVOLUTION will continue to rise above the competition and outperform your expectations. Every application. Every time.

## GREEN MACHINE

The EVOLUTION offers incredible cost savings. The 100 hp high efficiency electric engine of the EVOLUTION uses roughly 15% of the energy required to run a similar sized diesel loader. Imagine what an 85% reduction in operating cost could do for your bottom line.

## INTELLIGENT LOAD SENSING

The operational efficiency of the EVOLUTION gets another boost from the industry's most advanced and innovative load sensing system. Our load sensing system ensures that you have just the right amount of power you need at all times. No more. No less.

## POWER LIFTER

The EVOLUTION packs a punch. What truly sets it apart from its smaller sibling is the ability to lift incredible amounts a significant distance from the loader. This feature makes it possible to remain stationary while achieving the same level of efficiency as a wheeled loader.

## OPERATORS DREAM

The operator station of the EVOLUTION is a wonderful place to spend the day. Mounted on anti-vibration supports and available with heating, a/c and a fully pressurized cab, your operators will be comfortable in even the most extreme environments.

# NO TIME FOR DOWNTIME

## GUARANTEED QUALITY

At Rotobec, we proudly stand behind our loaders. Decades of rigorous quality and safety testing has gone into every machine we build in order to guarantee your satisfaction. We also manufacture and assemble every major component of the EVOLUTION in house to ensure that they meet our quality standards. Every Rotobec loader is built with one purpose: To outperform and outlast the competition.

## SERVICE MADE SIMPLE

Machine downtime is a costly inconvenience and we have taken every measure to ensure that our customers experience as little as possible. Our expert team of Rotobec trained service technicians are conveniently located all across North America and have the knowledge, parts and technology to keep you up and running. We take great pride in providing our customers with the best service in the business.













# VERSATILITY REDEFINED

The EVOLUTION is available with a lengthy list of features allowing owners to customize their loader to fit each unique requirement they may have. With four unique configurations available, there is no limit to possibilities. It's your loader, built the way you want it.

## CONFIGURATIONS

### SM-X

**Power unit:** On loader

**Operator station:** On loader

### SM-R

**Power unit:** Remote

**Operator station:** Remote

### SM-W

**Power unit:** On loader

**Operator station:** Remote

### SM-H

**Power unit:** Remote

**Operator station:** On loader

## OPERATOR STATION

The cab of the EVOLUTION is the largest available. An ergonomic seat and optional heating and A/C offers comfortable place for your operator to spend their day. A pressurized cab can be added for extreme working environments.

### STANDARD:

- Ergonomic seat
- Extra large cab (48" x 60")
- Mounted on shock proof frame
- Sliding side window
- Front wipers with washer fluid
- Cab fan
- Horn
- 4,000 W electric heater
- 12 v outlet
- Roof lights

### OPTIONAL:

- Air conditioning
- Tinted windows
- Windshield protection grid
- CB radio
- am/fm/cd radio w/ dual speakers
- Pressurized cab

## ADDITIONAL OPTIONS

### BOOMS:

- Hydraulic/dead heel for tree length wood
- LED Lights
- Work lights (directed sideways)
- Telescopic options

### HYDRAULICS:

- Extra cooling
- Harsh environment package
- Cylinder protectors

### OTHER:

- Anchor kit
- Grease system
  - Manual: centralized greasing points
  - Automatic: manually activated
  - Automatic: electrically activated
- Magnet
- Catwalk
- Saw

## CUSTOMIZATION

Rotobec has been designing and manufacturing loaders for 40 years. During that time, our custom loader division has worked on several projects for customers who had unique requirements that the competition could simply not meet. Our team of engineers worked closely with these customers to provide them with a solution to meet those needs.

If you have a requirement that is not met by our current product let us know. Rotobec is open to any custom project and we are always looking for a new challenge.





### HYDRAULIC SYSTEM

Operating pressure 4,200 psi

Features	<ul style="list-style-type: none"> <li>Variable displacement piston pump</li> <li>Heavy duty hydraulic accumulator for structure protection</li> </ul>
----------	--

### SWING SYSTEM

Rotation Continuous 360°

Slewing ring 45" outside diameter

Rotation speed 8 RPM

Features	<ul style="list-style-type: none"> <li>Joystick activated rotation</li> <li>Pedal activated rotation (optional)</li> <li>Limited rotation (optional)</li> </ul>
----------	---

### CYLINDERS

Main boom 2 x 5" bore, 3" rod

Stick boom 6" bore, 4" rod

Features	<ul style="list-style-type: none"> <li>Chrome plated tempered steel rod</li> <li>Dual cylinders on main boom</li> </ul>
----------	---

### POWER UNIT

Engine 100 hp high efficiency electric motor

Electrical system 12 VDC outlet available

Features	<ul style="list-style-type: none"> <li>600 v, 3 phase, 60 Hz</li> <li>Electric panel w/ 2 x 15 A/ 120 v outlets</li> <li>Cut off switch</li> <li>Thermostat oil cooler</li> <li>125 gal oil tank</li> </ul>
----------	---

### BOOM LENGTH OPTIONS

Standard 32'

Non-telescopic 27', 36'

Telescopic 37'

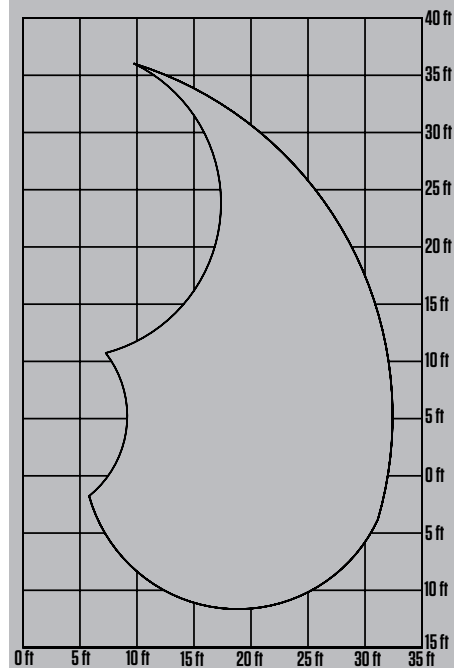
### BOOM

Structure Rectangular structure made of high tensile steel

Pivots	4" diameter heat-treated and chromed pins mounted on bronze bushings
--------	--

Features	<ul style="list-style-type: none"> <li>Induction tempered, chrome steel pins with bronze bushings</li> <li>Telescopic booms activated by electric button and proportionately controlled by lever</li> <li>2 x 55 W lights on stick boom</li> </ul>
----------	--

### BOOM SWEEP EVOLUTION 960 SM-X 32'



### APPROXIMATE LIFT CAPACITY (lbs)

		DISTANCE FROM CENTER OF ROTATION (ft)				
EVOLUTION 960 SM-X 32'	HEIGHT (ft)	10	15	20	25	30
	30			10,747*		
	25			12,793	9,317*	
	20			12,881	12,089	
	15		15,818	13,794	12,419	9,669*
	10	26,301	18,865	15,246	13,079	11,550
	5	16,786*	22,077	16,775	13,783	11,693
	0	10,703*	23,969	17,765	14,168	11,506
	-5	13,662*	23,815	17,721	13,827	10,340
	-10		21,461	16,181	12,155	

\* Limited by stick boom hydraulic capacity

\*\* Lift capacities calculated at 100% operating pressure

\*\*\* We reserve the right to change specs and improve our products without notice or obligation

### ROTOBEC LOCATIONS

CANADA EAST/  
INTERNATIONAL  
Sainte Justine, QC  
Tel: 418.383.3002

USA EAST, CENTRAL  
Littleton, NH  
Tel: 603.444.2103

USA SOUTH  
Dallas, TX  
Tel: 972.242.9516

USA/CANADA WEST  
Kelowna, BC  
Tel: 250.765.1161

**ROTOBEC**  
TOUGH HANDLING EQUIPMENT